

Unit 7 - Week 6

Course outline
How to access the portal
Week 1
Week 2
Week 3
Week 4
Week 5
Week 6
Week 7
Week 8
Text Transcripts

Assignment 6

The due date for submitting this assignment has passed. **Due on 2019-10-09, 23:59 IST.**
 As per our records you have not submitted this assignment.

1) Horst and Graben topography results from a series of normal faults in a/an _____ environment. **1 point**

- Compressional
- Extensional
- Shearing
- All of the above

No, the answer is incorrect.
 Score: 0
 Accepted Answers: *Extensional*

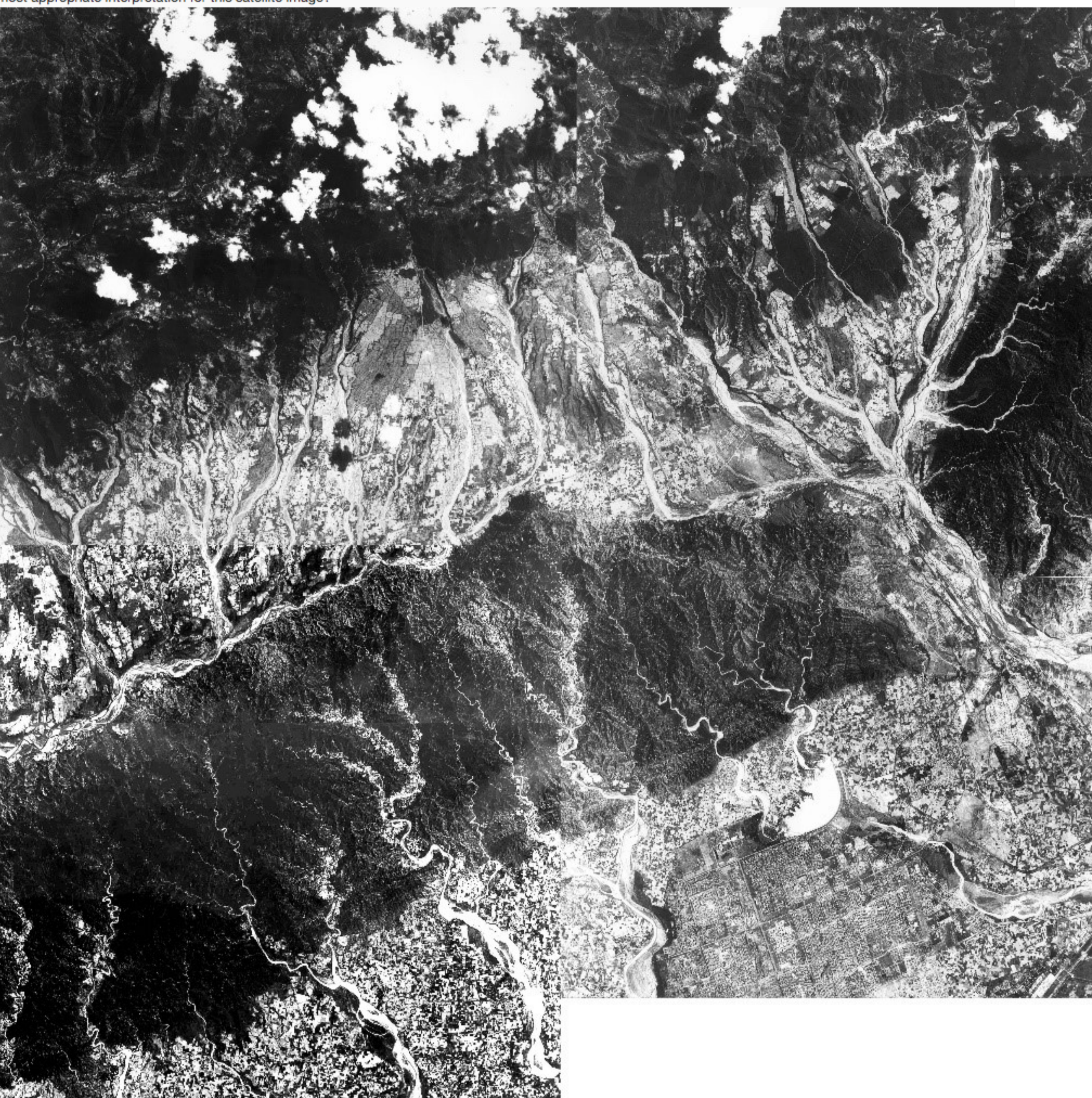
2) Identify the type of fault shown in the photograph below? **1 point**



- Normal Fault
- Strike-slip Fault
- Reverse Fault
- Thrust Fault

No, the answer is incorrect.
 Score: 0
 Accepted Answers: *Thrust Fault*

3) Below is a satellite image of an area around Chandigarh at the foothill zone of Himalaya. Based on your understanding of 'Photogeology', which is the most appropriate interpretation for this satellite image? **1 point**



- Parallel and dendritic drainage patterns developed over a fold
- Parallel and dendritic drainage patterns developed over an active fold
- Parallel and dendritic drainage patterns developed over an active fault
- Parallel and dendritic drainage patterns developed over a folded and faulted terrain

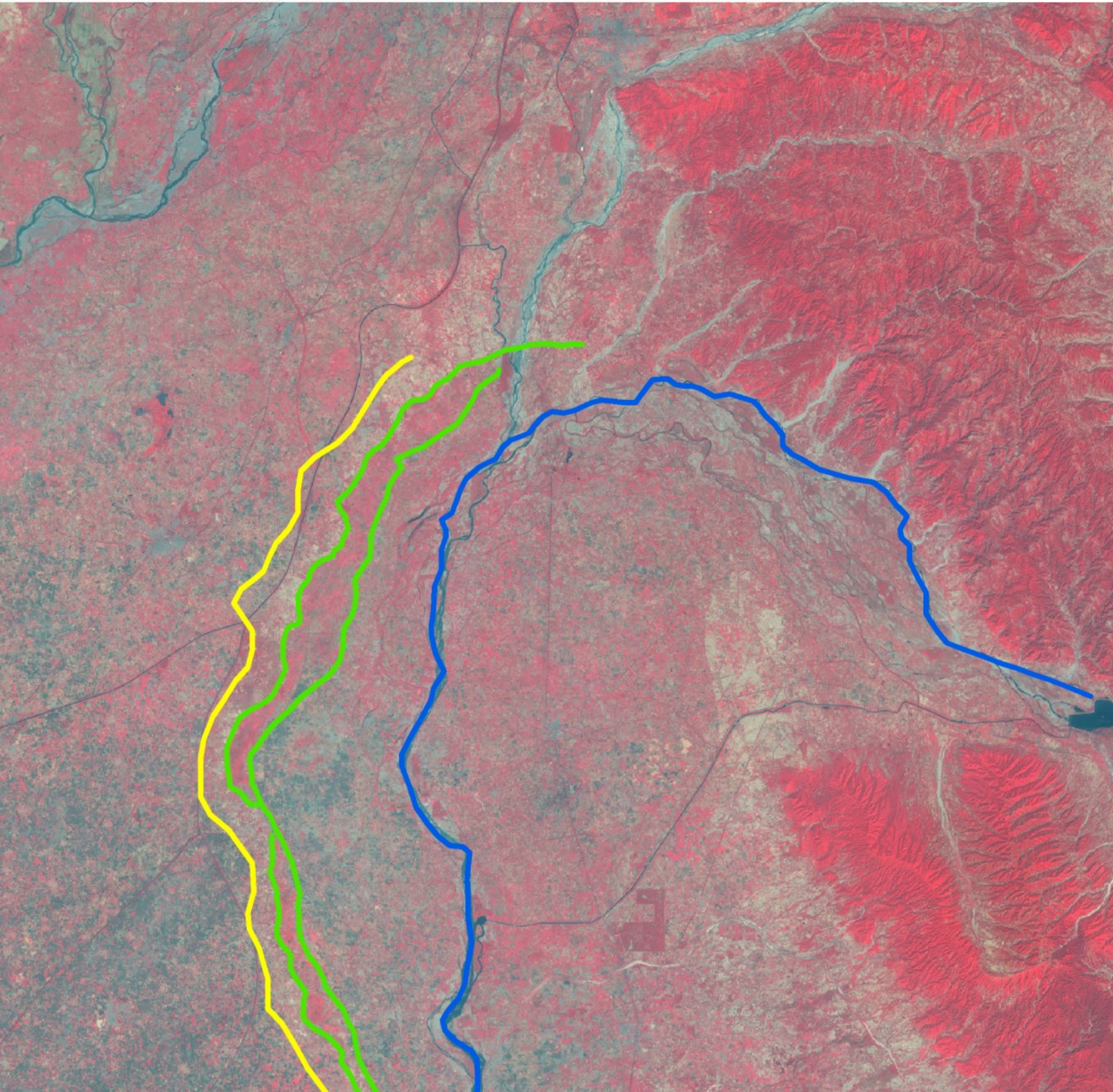
No, the answer is incorrect.
 Score: 0
 Accepted Answers: *Parallel and dendritic drainage patterns developed over a folded and faulted terrain*

4) Taksal fault around Chandigarh area has surface manifestations in form of deflected streams which while crossing that fault show diversion in their flows along the fault up to some distances, which suggests that Taksal fault is a type of _____. **1 point**

- Normal fault
- Reverse fault
- Strike-slip fault
- Thrust fault

No, the answer is incorrect.
 Score: 0
 Accepted Answers: *Strike-slip fault*

5) Below is the Landsat image of an area around Hajipur in NW Himalaya, used to identify paleo-channels and current channel of Beas River, which has been shifted due to _____. **1 point**



- Faulting
- Folding
- Surface Rupture
- Faulting and Folding

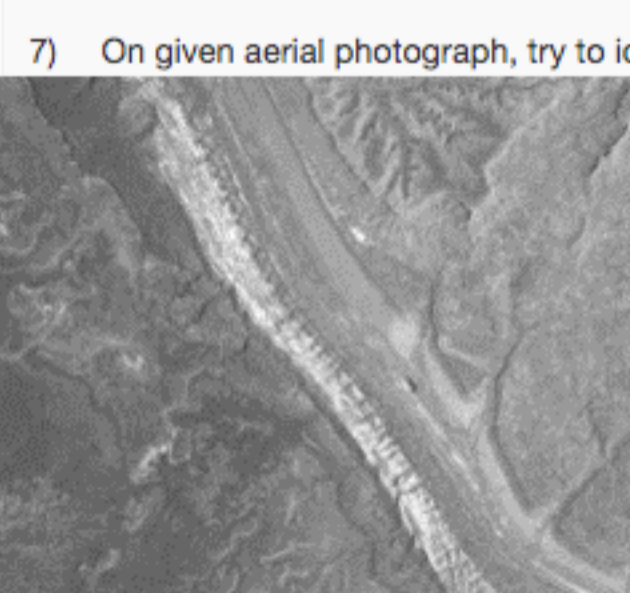
No, the answer is incorrect.
 Score: 0
 Accepted Answers: *Faulting and Folding*

6) Fault which one cause shortening of the earth crust? **1 point**

- Normal fault
- Reverse fault
- Strike slip fault
- All of the above

No, the answer is incorrect.
 Score: 0
 Accepted Answers: *Reverse fault*

7) On given aerial photograph, try to identify the lithology based on tonal variation. **1 point**



- Lighter- Sandstone, Darker- Shale
- Darker- Sandstone, Lighter- Shale
- Darker- limestone, Lighter- conglomerate
- None of the above

No, the answer is incorrect.
 Score: 0
 Accepted Answers: *Lighter- Sandstone, Darker- Shale*

8) Terrain having shale is more _____ compare to the sandstone area and therefore have _____ spaced drainage network than sandstone. **1 point**

- Resistive, Largely
- Erodible, Closely
- Resistive, Closely
- Erodible, largely

No, the answer is incorrect.
 Score: 0
 Accepted Answers: *Erodible, Closely*

9) As shown in the aerial photograph below, a project of linking crude oil pipeline was proposed to be undertaken over a fault topography where the pipeline was aligned with built-in bends due to being intersected by Denali fault, so that it would not rupture during the future earthquakes, because Denali fault is a type of _____. **1 point**



- Reverse fault
- Normal Fault
- Thrust fault
- Strike slip fault

No, the answer is incorrect.
 Score: 0
 Accepted Answers: *Strike slip fault*

10) On black and white or greyscale photographs, _____ shows characteristic of materials and reflect conditions of deposition, stage and type of weathering agents, water supply and drainage, plant association and properties of the soil profile. **1 point**

- Tone
- Texture
- Films
- Light

No, the answer is incorrect.
 Score: 0
 Accepted Answers: *Tone*